



Newsletter of the Washington Ship Model Society

It Can't Be...!!
The Entire Bridge
Team Made the Nice List!?!



ZWANI.COM



SKIPPERS CORNER

The 2017 holiday season is upon us! The entire bridge crew and I hope that everyone has a safe and happy holiday and that family togetherness and workshop stashes are both suitably enhanced! The club has been in the public eye at numerous events throughout 2017. I am very grateful to all who worked so hard to make these events so successful. Also at this festive time to remember our fellow citizens in uniform who are often far from home and festivities keeping our country safe. And, if Santa brought you coal instead of that kit from your Santa's Wish List, well there still may be hope!! A WSMS auction may be in your future. More information to come!! ! Lastly, let's all make a 2018 New year's resolution to drawdown the population of our collective " Unfinished Project Museum!"



Happy Holidays (and modeling)!

Joel

NEXT MONTHLY MEETING

Saturday, January 13th 2018
Meeting

Hollin Hall Senior Center, 1500 Shenandoah Road, Alexandria, VA 22308

Meeting Directions:

- From the beltway go south on Route One. Turn left onto Fort Hunt Rd. Head south about 3.5 miles to Shenandoah Road. There will be a Shell Gas station on the near corner and the Hollin Hall Shopping Center sign on the far right corner. Turn right on Shenandoah Road and proceed to the driveway on the right just beyond the 7-11. Enter the center by the door under the green roof. Look for sign at entry for room number!
- From the south turn off Route One to the right at Sherwood Hall Road. Continue past the Library about a mile to Fort Hunt Road. Turn right on Fort Hunt Road and head south to the gas station noted above.

Visitor's Always Welcome!



MINUTES - OCTOBER MEETING

The following members attended:

Bill Black
Francois Lachelier
Joel Labow
Larry Valett
Peter Gutterman
Roger Frye
John Downing
Doug Wilde



The Skipper made opening remarks.

Francois Lachelier was recognized for attending his third meeting. He was elected to membership unanimously.

Larry Valett discussed the November 11 event at the Oxford Community Center in Oxford, MD. He needs to provide a final headcount to organizers next week. To date, seven members have signed up to attend. Those who attended last year had a great time.

Roger Frye gave a demonstration of bending wood with a new tool and jig he recently acquired. The tool is basically a soldering iron with a round head attached to the tip. The wood (holly) is soaked in water and placed in the jig. The iron is then applied in a rolling motion back and forth until the wood acquires the desired shape. This may require several "wettings" of the wood to keep it pliable. Roger demonstrated using wood of 1/16 and 1/8 inch thickness to show the difference in getting the desired shape. This led into about a 20 minute discussion among members on similar processes and tools. Roger has been using the new tool to construct his whaleboats.

Larry Valett demonstrated a jig he constructed to make nets for cargo ships.

John Downing shared his recent acquisition of a 1/700 Kongo (Japanese Battleship) "as built". This is a new kit that was first produced in 2016. He also shared 1/3000 models of the Yamato and Mogami class Japanese ships. This is a scale normally used for war gaming. The kit came with a base that could be used to construct a diorama. John also passed around two recent books he purchased in Cherbourg, France about the French

Battleship Charlemagne. One book contained detail plans. The second was a history with lots of photos.

Doug Wilde shared a 1/72 Trieste submersible that he found on eBay. He also found a 1/60 scale model of the Russian submersible Mir.

Joel shared his HMS Victory cross section. He has added 12 frames to the length of the kit to allow for the display of ships boats/ This is a subscription kit that allows you to build the kit in sections. More information is available at:

https://www.deagostini.com/uk/collections/hms-victory/?gclid=EAlaIqobChMI_ouBxvD11gIVx0OGCh3vHQgbEAAYAiAAEgJDlFD_BwE

https://www.deagostini.com/uk/collections/hms-victory/?gclid=EAlaIqobChMI_ouBxvD11gIVx0OGCh3vHQgbEAAYAiAAEgJDlFD_BwE

The meeting adjourned at 12:10.



Bridge Announcements

Skipper - WSMS Elections

Elections are tentatively scheduled for April-May time frame. Members are encouraged to submit nomination for the four ridge positions starting in January to the Nomination Committee. The committee members are Joel Labow and Doug Wilde.

1st Mate – The Oxford Maryland Model Expo show was a great success with a wonderful turnout by WSMS. Larry, Peter, Joel, Bruce, Doug, displayed several ships of all kinds, with positive comments and questions from nearly 1000 visitors to the event this year! Some other WSMS members came to the show to see the many models and Chesapeake boats on display. Thanks to all for making this a popular and successful event!

Volunteer Hosts Needed!

Lou volunteered to host the January focus meeting, but we need more members to step up. December is still open and every month from February on as well. These informal sessions are always great for seeing where our members create their models, discover an individual's interesting tools and jigs, as well as never before seen models. So **Please**, step forward! Previous hosts can testify that we're all housebroken.

Upcoming events:

1. Old Dominion Open Scale Model Show & Contest:

February 24, 2018, in Richmond Virginia. Details will be sent in coming months prior to the event. The Old Dominion Open (ODO) has been a Richmond tradition for decades now and is one of the largest scale modeling shows on the east coast. There are over 60 contest categories with First, Second and Third place awards and special awards that include Best In Show. There are over 120 vendor tables, display-only tables, a huge kit drawing and many more things for you to enjoy! Get updates by visiting the IPMS Richmond Facebook page



<https://www.facebook.com/IPMSRichmond> or the IPMS Richmond Blog

<http://ipmsrichmond.blogspot.com/> .

2. Cabin Fever Expo & Auctions, January 12-14, 2018, Lebanon Valley Expo Center, 80 Rocherty Road, Lebanon, PA. It's a huge event the and largest show of it's kind in the country showcasing model planes, trains, cars, and engines of all kinds. Details can be found at Caution-www.cabinfeverexpo.com < Caution-<http://www.cabinfeverexpo.com> > .

Purser - Dues Reminder

WSMS approved and pledged \$150 to sponsor ship modeling awards at the 2018 Old Dominion show.



We intend to provide \$75.00 along with instructions that if the \$40 Special Best Maritime Award is not spoken for it should go for that first, otherwise it's be used as needed with a note that we would like 1st dibs for the 2019 ODO show on the Maritime awards.

Ship's Clerk - WSMS Badges & Coffee Cups for New Members

I am putting a list together and am checking it twice!. If you are a member and need a badge and/or cup please contact me!

Commodore – Upcoming Richmond IPMS Show

The 2018 Old Dominion Open Model Show and Contest is approaching. WSMS may again sponsor six of the Maritime model trophies.

1. Surface, sail & oar
2. Surface, engine powered 1/350 & larger
3. Surface, engine powered 1/351 & smaller
4. Submarines
5. Civil (cruise & merchant ships, liners & pleasure)
6. Wood constructed, all types

Lynx Editor - Lou is soliciting feedback on the newsletter. What would you like to see included? What don't you like? There was a suggestion that we have a section called "Builds in Progress" for members to display current projects. Send your Letters to the Editor to Lou at

Webmaster – Happy Holidays!!

Looking forward to getting some winter projects photos for our website!

Extract From the WSMS By-Laws on officer Duties & Elections

V. Officers

- (a) The elected Officers of the Society shall be four (4) in number; Captain, First Mate, Ship's Clerk and Purser. In addition, the retiring Captain shall be known as Commodore until a new Captain is elected, with duties as mutually agreed upon.
- (b) The Bridge shall consist of the Captain, First Mate, Ship's Clerk, Purser and the Commodore. The Captain may appoint other members of the Society to serve as temporary members of the bridge to participate in the discussion of a particular matter.
 - 1. The Bridge shall exercise general supervision over the interests and affairs of the Society, and shall establish/continue various standard operating procedures and policies not specifically covered by these Bylaws, subject to the approval of the membership where necessary.
 - 2. The Bridge shall be empowered to act on behalf of the Society in the interim between regular meetings and shall report all actions to the membership.
 - 3. The Bridge shall meet as necessary and present its conclusions and recommendations to the membership for consideration and/or approval.
- (c) In addition to serving as a member of the Bridge, the duties of the Officers shall be as follows:
 - 1. The **Captain** shall have general supervision over the Society, preside at meetings, call special meetings and appoint committees.
 - 2. The **First Mate** shall, in the absence of the Captain, perform the duties of the Captain. In addition, the First Mate shall function as the Program Chairman, coordinating the schedule of programs for future meetings.
 - 3. The **Ship's Clerk** shall keep minutes of all meetings, attend to correspondence and report all matters of interest to the Captain and the membership. The Ship's Clerk shall also be responsible for notifying the membership of the monthly meetings which may be in the form of a newsletter prepared by the Clerk or by a Newsletter Editor, and distributed as appropriate.
 - 4. The **Purser** shall collect and disburse all monies of the Society and render a report of the finances at each regular meeting. He/she may open a Society checking account for routine expenses, and a secure savings account for any excess funds. His/her books and records shall be audited at the end of each fiscal year. The Purser shall maintain an up-to-date roster of members (paid and unpaid) and furnish it periodically to the Ship's Clerk.
- (d) The Captain shall appoint a Nominating Committee at the regular meeting in April of each year which shall form a list of nominees for officers. Candidates provided by the Nominating Committee will be proposed to the membership at the regular meeting in May to which will be added any additional nominations from the floor. Election of Officers will be conducted at the regular meeting in June. Each Officer must be elected by majority vote of all Active Members present.

- (e) The term of office for each Officer shall be one (1) fiscal year. An individual may serve only three (3) terms in succession in the same office. Due to the desirability for continuity in the office, a waiver of the succession rule may be granted by the membership for the Purser and/or the Ship's Clerk, if the member in office is unopposed at the time of elections.

WSMS NEWS & VIEWS

A WSMS Auction Slated for the February Meeting

By Lou Husser

Plan to attend! These are really fun events and a chance to pick up some especially great deals! We normally hold auction about every 2-3 years or so, once enough auction material is available. Although we held one this past February, we were a recipient of a major windfall of unbuilt and partially built kits, several pond models in various states of repair, and some odds and ends worth consideration. For planning purposes the intent is to follow the same successful pattern from the last two auctions. The Bridge is considering scheduling it as our regular February monthly meeting Saturday, 10 February from 10AM to 2PM. The venue will likely be at the same pub, Rhodeside Grill in Arlington, VA. It offers us a private room and food service for our exclusive use. All donated material with the exception of written material will be auctioned. Most of the reading material will be pre-priced. In past years we looked up donated books in advance of the auction on Amazon to see what they were going for 2nd hand; took that price and cut it in half. So a book that sells 2nd hand on Amazon for \$5.00 would be placed on a table and marked for sale at \$2.50. Generally most magazines will be priced something like \$1.00 each or 4 for \$2.00. If a book is thought to be a classic or particularly sought after, we may auction it. Note; all profits from the auction will go into the WSMS treasury. To participate in the auction you will need to be cleared by Carl our Purser as up to speed on your dues. If a concern, all you need to do is get your dues caught-up with the Purser at the Auction.

For planning and inventory purposes, if you intend to donate items please pass a list to me at LBHusser@verizon.net. Anything that can be related to modeling is fair game for donating; model kits, tools, supplies, references, etc, all are welcomed! This is especially important with respect to written material for cost estimating purposes. Assuming that you will also attend the auction bring your donations along with you but plan to get there 30 minutes early for setup purposes. If you plan to donate material but can't attend the auction, let Lou know by email so he can arrange a pickup; if you plan to attend the January Business or Focus meeting, donations along and we will ensure they get to the auction. All donated material will be placed with all the other like material in a common area where members can look over what's to be auctioned. That way the person can pace their-self on bidding so as to have enuf for anything he/she particularly is interested in.

WSMS MEMBER'S SCUTTLEBUTT

*A column where members can contribute most any notes or recommendations pertinent to ship modeling
Send comments to Lou Husser at LBHusser@verizon.net*



Guess who bought another 3-D printer?

I (Bruce) recently purchased thru Amazon another 3-D printer; a resin printer. I also bought 3-D plans for printing a pot pie skiff. I hope to have a

print sample from the new resin printer by the next meeting. So far, I got a cube to print yesterday and I left it in the sun today to finish curing.

Bruce Buchner

Here's a neat and unusual diorama.

<http://www.modelshipgallery.com/gallery/dio/wrecks/>

[Ashore-700-km/index.htm](http://www.fabulouscollectionofshippictures.com/index.htm) Fabulous Collection Of Ship Pictures

Jack Ray, Friend of the WSMS

Somebody led me to this on Steel Navy. It is fabulous collection of ship pictures. They are in galleries by first letter of the name. You can look at them by thumbnail or if you click on one and open it there is a panel on the upper right that lets you page through them or start a slide show. The download button is in the lower right. I'm just running the slide show in the corner of my screen.

<http://www.photoship.co.uk>

Bruce D. Buchner

U-Boats along the Carolina Coast

Here's something for whatever ... I was down on NC coast and learned a new thing (to me, anyway). Are you aware that the Germans were torpedoing and shooting up our ships during the war? Growing up here I heard a lot about that ... so I thought ... but then I learned that among the first ships sunk was the Diamond Shoals lightship and SHE WAS SUNK DURING WWI !!! She went down in

1918. A friend of mine is building a model of the German sub that sank her. His plan is to have it ready for the 100th anniversary of the lightship's sinking next year. The model is 12' in length!

Bill McKay

Re-usable Mold Material

This might be fun!!?

<http://composimol-luyn.soundestlink.com/view/570bb3fc5d24f64cf79d53fb/565db72c82eab857613225b8>

Bruce D. Buchner

Online Commercial Source for Models

Below is the link for the Antics website. They have a pretty extensive collection, especially in 1/1250.

http://www.anticsonline.co.uk/426_1.html

Jack Ray (Associate Member)

Online Source of Contemporary Model Parts

Stumbled across this site. It offers mostly contemporary models and parts in various scales, and looks to be good quality!?

<http://www.shapeways.com/shops/HomeportModels>

Lou Husser

MEMBER & FRIENDS CONTRIBUTED ARTICLES

**Travels to the Portsmouth England & Amsterdam Netherlands Spain
Naval Museums**

By Don Bittner

I recently spent half the day in the Spanish Naval Museum. This is a ship modeler's paradise; also a naval painting Godsend. Much from the 15th to 21st Centuries, including some of Spain's successes and defeats. The model of the **Royal Bourbon** - an 110 or 120 ship of the line (never built) which was to be the best of the Spanish art of shipbuilding in the 1820's...just as technology was producing the obvious change in ship building, TTP's, and eventually combat at sea.

Once you see the Madrid naval as opposed to the Barcelona maritime museum, you will know what I mean. Very candid...to include the Spanish-American War, Spanish colonial operations in the Philippines, and other matters. This includes colonial explorations and thence to late 20th and early 21st century Spanish naval capability.

Madrid Naval Museum Photos





Amsterdam Naval Museum Photos



**Model of the *William Rex*
Adriaen de Vriend (?-1698),
Cornelis Moesman**

wood, brass, iron, glass, rope, textile, 1698

This model shows the appearance of a Dutch warship in the late 17th century. It was made at the dockyards of Vlissingen (Flushing), where real warships were also built. These would have been more than twelve times larger than this model. This ship has 74 guns. The model was displayed in the council chamber of the Admiralty of Zeeland in Middelburg.



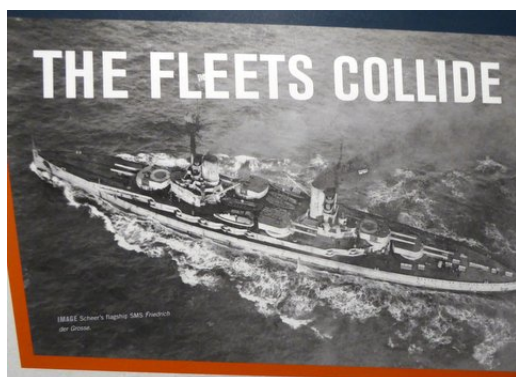
FULL SCALE REPRODUCTION - DUTCH EAST INDIANMAN

11 December 2016

Lou,

Thought you would find the enclosed of interest. They are from the National Museum of the Royal Navy Portsmouth, to include HMS *Warrior*, operating under a separate trust. Sharon (Note - Their daughter) was married on board her over a decade ago. The Jutland exhibition is open through 2017. A combination ticket (seniors - 26 pounds, 42 pence gives unlimited entrance to everything for a year from admission to the first. Jean and I have been to the Jutland and plan to return to it and the others in the spring).

The Jutland exhibition does little to convey an understanding of the battle as a whole; rather, its focus is on the chaos, terror, horror, and cost off/to the men engaged in battle, primarily in ships fighting it - especially in ships-on-ships' actions. Hence, its focus is on the tactical as opposed to operational. Overview panels try to convey a sense of the strategic, i.e., the RN won the battle, the maritime situation did not



change, the blockade of Germany continued as did the High Seas Fleet remaining bottled-up in port, hence Jutland ensured Britain and her allies/friend (i.e., the U.S. as an associated power) would win the war. Photographs are excellent and there are some

superb ship models in the exhibition, as well as other items, e.g., Admiral Sir John Jellicoe's decorations (to include Prussia's



IRON DUKE 1

Order of the Red Eagle) and his uniform; Major Francis Harvey's (RMLI) VC, sword, and VC certificate; Admiral Reinhard Scheer's portrait, and the telegram from the Kaiser to Scheer informing him of his promotion to Admiral and the award of the Pour

de Merite (the Blue Max) to him and Admiral Hipper.



HMS CANADA 1

Note also that the M-33, the Monitor that was at Gallipoli, is now open to the public as it has been restored, as well as the new Mary Rose museum.



REMAINS, HENRY VIII'S MARY ROSE



Please also note that the Georgian Tea Room in the dockyard has closed, and its equivalent has moved to another former boat building in the dockyard. Fine, but with a different ambiance. There is also another restaurant in another building in the complex open to the public.



MODEL OF HENRY VIII'S MARY ROSE 1

Finally, work continues on HMS Victory - and it appears that the re-masting of the ship is now occurring.

Don Bittner
*Professor Emeritus,
Marine Corps
University
Quantico VA*



HMS VICTORY UNDERGOING RE-MASTING 1

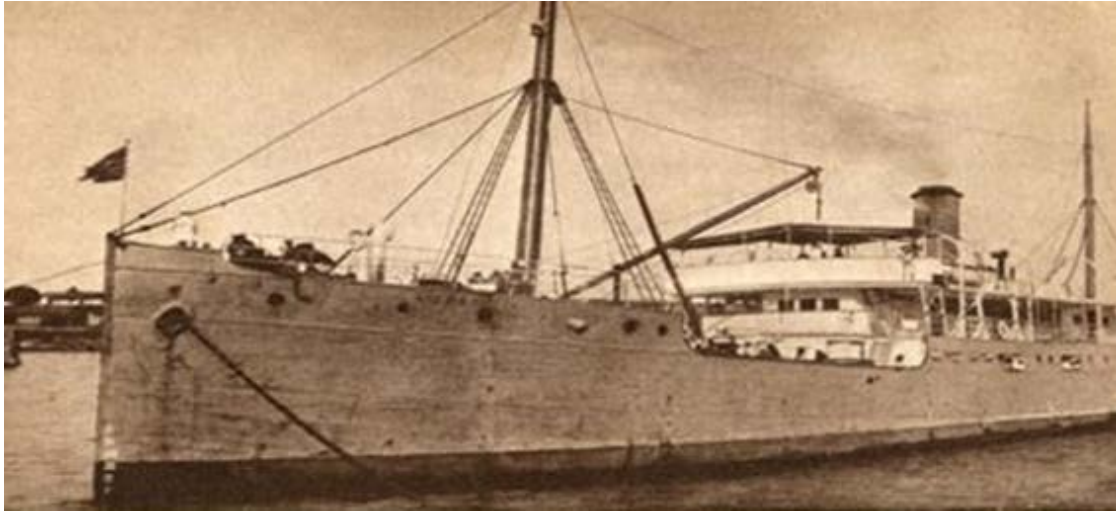
MODELING TIPS & TECHNIQUES

Tip #1 - “Mark Twain” Riverboat - Courtesy of Burt Goldstein, member of the Ship Models Association, CA
A free cardstock model depicting the riverboat in Frontier land at Anaheim’s Disneyland is available at www.dinseylandexperience.com it includes the model parts and instructions. The detail is considered amazing and that the model will hold its own with any other type of model. The riverboat has three decks, 12 stairwells, as well as the control room and anything else you can see on the actual steamboat located at Disneyland.

Tip #2 - Use of Acrylic Paints With A Brush

1. Seal Basswood planking/structures with Minwax Polycrylic finish (water based varnish) and sand lightly with foam sanding pads.
2. Model Shipway acrylic paints were thinned ~20% with filtered water to obtain a good consistency.
3. Wood and metal surfaces were primed.
4. Multiple thin coats of colors were applied using high quality artist brushes - typically (2-3) coats for dark colors and (3-4) coats for light colors.
5. After (4-6) hours of drying time, the exterior hull and bulwarks were sealed with Minwax Wipe-on-Poly (oil based varnish) without a problem.

DECEMBER MYSTERY SHIP



Hint – she was built as a lake a passenger and cargo ferry

What was her original and follow-on name and countries of registry?

What lake did she operate on?

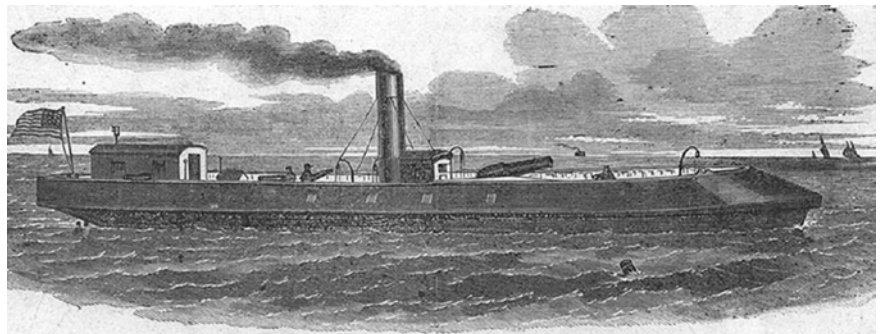
What war did she serve in and for which side?

Is she still afloat?

September Mystery Ship Winner & Answers

John Downing (Wins Again!!!)

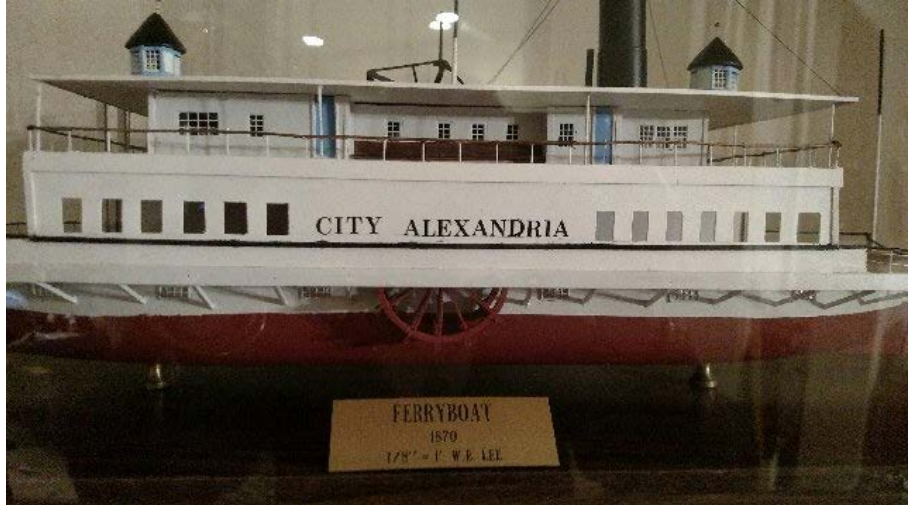
Gunboat Cutter E.A. Stevens,
Revenue Cutter Service (Coast
Guard)
It had tanks which allowed it to
lower the freeboard for a smaller
target
It fought CSS Virginia in 1862



Classifieds

Model of 'City Alexandria' Ferryboat - information Request

Attached is a picture of a model ship that was built by Bill Lee, who was a friend of my late aunt. I also have a few other pieces that appear to be wood carvings but, unfortunately I don't know their history. I was wondering if any of your members may be familiar with Mr. Lee's work and what the best approach may be if I decide to sell it. Thanks so much for any help you can provide.
Cheryl Cooke



ctkttt@aol.com

Lynx Editor's Note: *The above classified was received several months ago but was never published*

Clipper in need of repairs

Here's a repair job opportunity that just came in. Please let me know if you're interested.

John Huddock

jandshudock@verizon.net



IPMS Richmond Presents
Old Dominion Open
Scale Model Show and Contest
February 24, 2018



IPMS Richmond

Richmond Raceway Complex

The Henrico Building

600 E Laburnum Richmond, VA 23222

Doors open 8:30 Registration closes 12:30

**Over 70 Model Categories
Hobby Vendors
Special Awards
Huge Kit Drawings**

See More about IPMS ...

Blog: <http://ipmsrichmond.blogspot.com>

FB: <https://www.facebook.com/IPMSRichmond>

